

Correct collection process is vital to receiving the most accurate NGS diagnostic results. Please follow the steps below.



# PRIMARY CARE SAMPLE COLLECTION METHOD

## NASAL


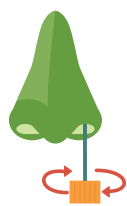


2 Methods: Swab & Blow Out

### Do's & Don'ts



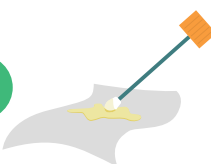

- ✓ **DO** - Collect sample from inflamed area. Sample material can be both scab and mucus and should include swab of tissue from which the material was taken.
- ✓ **DO** - Use Afrin, Lidocaine and Tetracaine at 2% if numbing agent is needed.
- ✓ **DO** - Wait 10-15 minutes after administering Lidocaine or use saline spray prior to taking your sample.

- ✗ **DO NOT** - Use the wire stem found on traditional culture swabs. Metal is a PCR inhibitor and will yield negative results.
- ✗ **DO NOT** - Take antibiotics. Patient must be off all antibiotics for 2 days prior to collection. This is optimal. However, if not possible, the test can still be run.
- ✗ **DO NOT** - Use Lidocaine at 4%.
- ✗ **DO NOT** - Touch the swab stem.

### SWAB METHOD

-  Twist the orange cap at dotted line to open tube; bend the swab stem if necessary.
-  Gently insert swab into the nostril and swab inflamed area. Rotate around inflamed area of nasal cavity a few times applying pressure to collect as much material as possible. To ensure optimal diagnostic reports, include solid materials in your sample.
-  Put the swab into the specimen tube.
-  Tightly seal the tube and/or vial.

### BLOW OUT AND SWAB COLLECTION METHOD

-  Twist the orange cap at dotted line to open tube; bend the swab stem if necessary.
-  Have patient forcefully blow their nose into a tissue.
-  Swab the tissue to collect as much material as possible. Be sure to collect any material with green coloring and fragments left in the tissue.
-  Tightly seal the tube and/or vial.



- a. Use a permanent marker to write name and collection date on small tube/vial.
- b. Please have the patient sign the lab requisition form accepting financial responsibility.

Submit patient face sheet and demographics with insurance information and both sides of a patient's insurance card.

SEE SHIPPING INSTRUCTIONS NEXT

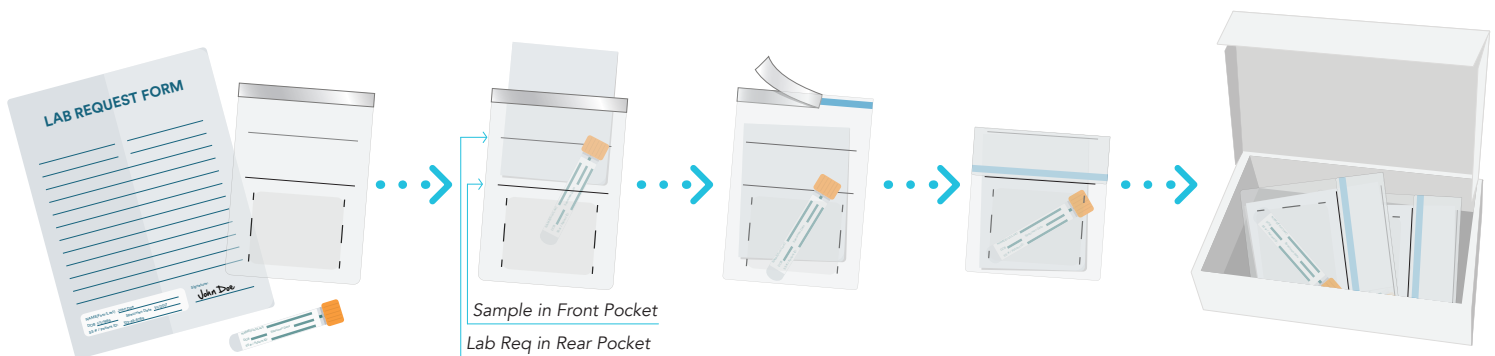


1-855-208-0019 | [info@microgendx.com](mailto:info@microgendx.com) | [microgendx.com](http://microgendx.com)  
SOUTHWEST REGIONAL PCR LABORATORY, DBA MICROGEN DIAGNOSTICS, LLC

## PACKING SAMPLES FOR SHIPMENT

1. Place the Sample Container and Vials into the front pocket (between the black hash-lines) of Biohazard Lab Bag.
2. Place folded Lab Requisition Form into the back pocket of the Lab Bag.
3. **IMPORTANT:** Place only one Sample and one Lab Requisition in each Lab Bag.
4. Peel white strip off Lab Bag to expose adhesive backing and follow instructions printed on Bag to create a continuous, airtight seal.
5. Place the sealed Lab Bag into the Prepaid FedEx Shipping Box.
6. **You can add multiple completed lab bags into 1 FedEx Shipping carton.**

**NOTE:** More than one Lab Bag can be placed in the Shipping Box



## 3 CONVENIENT FEDEX SHIPPING METHODS

1. Drop into FedEx Dropbox including Kinkos FedEx locations
2. Call for pick up 1-800-GoFedEx (1-800-463-3339). Say "agent" twice to speak to agent. Let them know it's a prepaid pick up.
3. Use our online "schedule a pick up" page at [MicroGenDX.com](http://MicroGenDX.com).

*When possible, retain your tracking number.*

