

THIS TEST COMES WITH:



COLLECTION DO'S & DON'TS

- ✔ **DO** — Clean the genital area with soap and water before collecting the sample.
- ✔ **DO** — Collect both Urine and Semen samples on the same day.
- ✔ **DO** — Ship your sample as soon as possible after collection. the provided steps carefully. This is optimal, however, if there is a slight delay, MicroGenDX samples are stable significantly longer than culture samples.
- ✘ **DO NOT** — Use Lidocaine gel. If collecting urine via catheter, Lidocaine gel can render sample invalid or give false negative test results.
- ✘ **DO NOT** — Take antibiotics. Patient must be off all antibiotics for 2 days prior to collection. This is optimal. However, if not possible, the test can still be run.

COLLECTION BEST PRACTICES

If possible limit consumption of liquids 60 minutes prior to taking a urine sample to avoid excessive dilution. However, the test can still be run. Consult with your provider if this interferes with your medical regimen.

****If ordering UA Biomarkers please ship samples within 48 hours of collection. Sample must arrive at lab within 5 days.****



Scan this code to view video sample collection instructions.

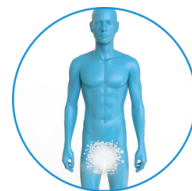
BOTH SAMPLES MUST BE COLLECTED ON THE SAME DAY AND SENT IN THE SAME BOX.

NOTE: URINE SAMPLE SHOULD BE TAKEN BEFORE SEMEN SAMPLE

COLLECTING URINE SAMPLE

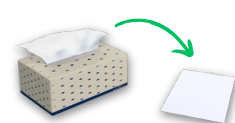
STEP 1

Wash hands thoroughly. Cleanse all areas around the urinary exit with soap and water. With a clean tissue, blot the vagina without touching any part of genital area with hands.



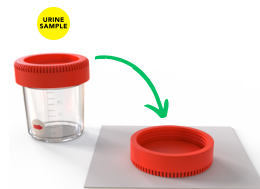
STEP 2

Spread a clean tissue on a surface close to the toilet bowl. Remove the lid from the urine cup and place it top-side down on the tissue. Place the open urine cup next to the tissue, being careful not to touch the rim of the cup or lid with fingers or body surface at any time.



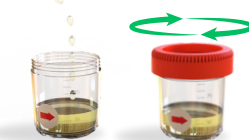
STEP 3

Before urination, retract the foreskin (if uncircumcised), avoid touching the urethra opening. Hold the empty cup in one hand. Begin urination into toilet, not cup, stop urination partway through then continue urination into cup. **Keep urinating into cup until the amount in the cup is level with the red arrow sticker. DO NOT fill the cup more than half full.** Finish urinating into toilet.



STEP 4

Secure the lid tightly by placing the lid directly on the cup and turning until you hear two clicks. This indicates the cup is locked.



COLLECTING SEMEN SAMPLE

STEP 1

Use the included Cleansing Wipe to clean the genital area.



STEP 2

Collect semen excretion into sterile container. If enough excretion is collected (more than a pea size amount), cap and seal the container and prepare for shipping. If you have only collected a minimal amount, proceed to step 3.



STEP 3 *Do this step only if necessary*****

If only a minimal amount of semen excretion is collected (pea size amount) use the swab to collect the fluid by rolling swab through the fluid in the collection cup collecting as much fluid as possible on the swab tip.



STEP 4

Insert the swab back into the specimen tube and push until securely closed.



SEE PATIENT INFORMATION & SHIPPING INSTRUCTIONS ON REVERSE

Correct packaging is vital to ensuring your sample is processed in a timely manner. Please follow the steps below.

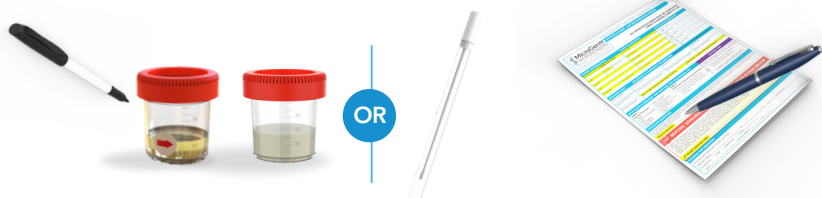
PATIENT INFORMATION

1. MARK SAMPLE

Use a permanent marker to write patient name, date of birth and sample collection date on the 90mL Urine Collection Cup and either the 90mL Semen Collection Cup or Multi-Purpose Swab Tube.

2. SIGN LAB REQ

Please have the patient sign the lab requisition form accepting financial responsibility. Be sure the physician has also signed the lab requisition form confirming consent.



PACKING SAMPLES FOR SHIPMENT

1. Place the 90mL Urine Collection Cup and either the 90mL Semen Collection Cup or Multi-Purpose Swab Tube into the center/seal-able pocket of their respective Biohazard Lab Bags.
2. Place folded Lab Requisition Form into the open back pocket of **ONE** of the two provided Biohazard Bags.
3. Securely close both Biohazard Bags using the ziplock strip to create a continuous airtight seal.
4. Place the sealed Biohazard Bags into the MicroGenDX Shipping Box (shipping label already attached to bottom of box).
5. Close the MicroGenDX Shipping Box and seal with the clear sealing sticker or a piece of tape.
6. You can add multiple completed Biohazard Bags into a MicroGenDX Shipping Box.

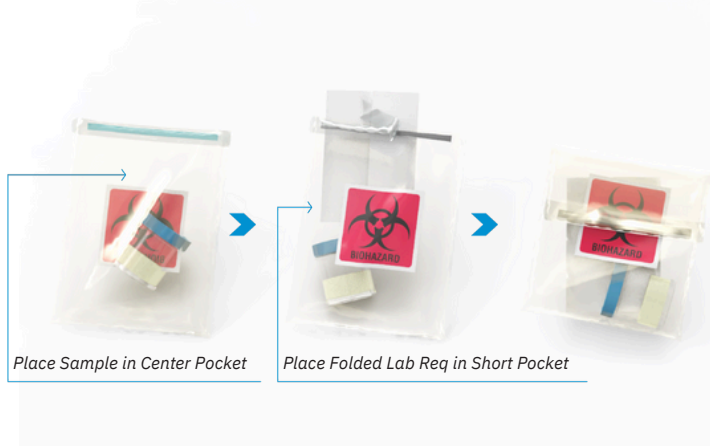


Place folded Lab Requisition Form into the short pocket of **ONE** of the two provided Biohazard Bags.



Place Sample in Center Pocket

Place Registration Card in back Pocket



Place Sample in Center Pocket

Place Folded Lab Req in Short Pocket

NOTE: If you are shipping multiple complete test samples in one box, please make sure to place a complete set of samples (urine & vaginal or urine & semen) for each individual patient into a single Ziploc bag (included). A complete set should consist of 2 bio bags each containing a single collected sample. As a reminder, please make sure to fill out the patient's name and date of birth sticker that is located on the outside of the larger Ziploc bag.

3 CONVENIENT FEDEX SHIPPING METHODS

1. Drop into FedEx Dropbox including FedEx locations
2. For Physician Offices Only: Call for pick up 1-800-GoFedEx (1-800-463-3339). Say "agent" twice to speak to agent. Let them know it's prepaid pick up.
3. For Physician Offices Only: Use our online "schedule a pick up" page at MicroGenDX.com. *Make sure to retain your tracking number.*

