



**SAMPLE COLLECTION METHOD | NASAL**  
3 Methods: Nasopharyngeal Swab, Suction, Blow Out & Swab

**THIS TEST COMES WITH:**



**COLLECTION DO'S & DON'TS**

- ✓ **DO** - Have a trained medical professional collect Aspiration/Suction and Nasopharyngeal swab collection methods to prevent injury.
- ✓ **DO** - Collect sample from inflamed area. Sample material can be both scab and mucus.
- ✓ **DO** - Use Afrin, 2% Lidocaine, or 2% Tetracaine if numbing agent is needed.
- ✓ **DO** - Wait 10-15 minutes after administering Lidocaine/Tetracaine. Utilize saline rinse/spray prior to taking your sample.
- ✓ **DO** - Ship your sample as soon as possible after collection. the provided steps carefully. This is optimal, however, if there is a slight delay, MicroGenDX samples are stable significantly longer than culture samples.
- ✗ **DO NOT** - Use the wire stem found on traditional culture swabs. Metal is a PCR inhibitor and will yield negative results.
- ✗ **DO NOT** - Use site specific antimicrobials (topicals), lavages, rinses, or inhalers 48 hours prior to sample collection. However, if not possible, the test can still be run.
- ✗ **DO NOT** - Use 4% Lidocaine.
- ✗ **DO NOT** - Touch the swab stem.

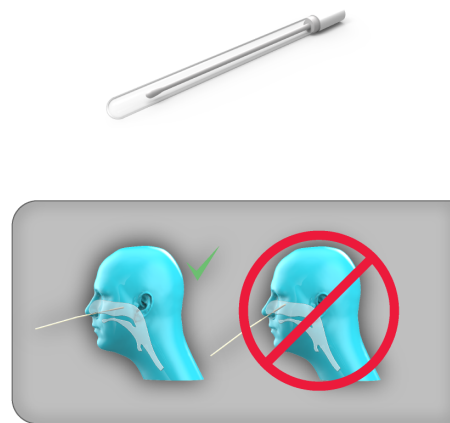
**ASPIRATION/SUCTION (PREFERRED METHOD - Clinical Collection Only)**

- STEP 1**  
Use suction with a trap device to collect the sample, scab material may be included. When finished remove trap from collection device.
- Note: If necessary, "milk" the tubing to move secretions still within the tubing into the collection tube. Sterile saline can also be used to flush contents in the rubber tubing into the collection tube. Make sure to keep the tube upright to avoid the sample exiting the tube into the suction system.
- STEP 2**  
Open the swab by twisting the cap at the dotted line on the tube.
- STEP 3**  
Use the swab to extract contents from trap. Additional contents may be added to the swab tube or the 2mL vial.
- STEP 4**  
Insert the swab back into the tube and push closed. For extra security seal the tube shut with paraffin or tape. If using 2mL vial tightly secure lid.



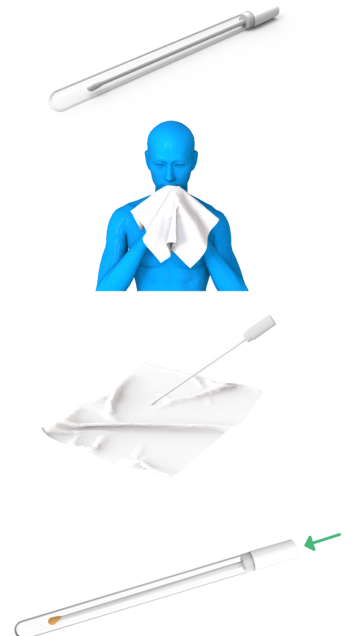
**NASOPHARYNGEAL SWAB (Clinical Collection Only)**

- STEP 1**  
This specimen collection method must be administered by trained qualified, clinical staff. Open the swab by twisting the cap at the dotted line on the tube.
- STEP 2**  
Gently insert swab into the nostril, past the middle meatus or middle concha, and swab the area. Rotate around the area and allow the swab to collect as much material as possible. To ensure optimal diagnostic reports, include solid materials in your sample. Note: Try to avoid touching the nares or nostrils, as this area is colonized with normal skin flora.
- STEP 3**  
Put the swab into the specimen tube and tightly seal the tube.



**BLOW OUT & SWAB (Clinical Collection/Patient At-Home Collection)**

- STEP 1**  
Open the swab by twisting the cap at the dotted line on the tube.
- STEP 2**  
Have patient forcefully blow their nose into a tissue.
- STEP 3**  
Swab the tissue to collect as much material as possible. Be sure to collect any material with green coloring and fragments left in the tissue.
- STEP 4**  
Put the swab into the specimen tube and tightly seal the tube.



Scan this code to view video sample collection instructions.

SEE PATIENT INFORMATION & SHIPPING INSTRUCTIONS ON REVERSE ↑

## PATIENT INFORMATION

### 1. MARK SAMPLE

Use a permanent marker to write patient name, date of birth and sample collection date on the Swab Specimen Tube.



### 2. SIGN LAB REQ

Please have the patient sign the lab requisition form accepting financial responsibility. Be sure the physician has also signed the lab requisition form confirming consent.



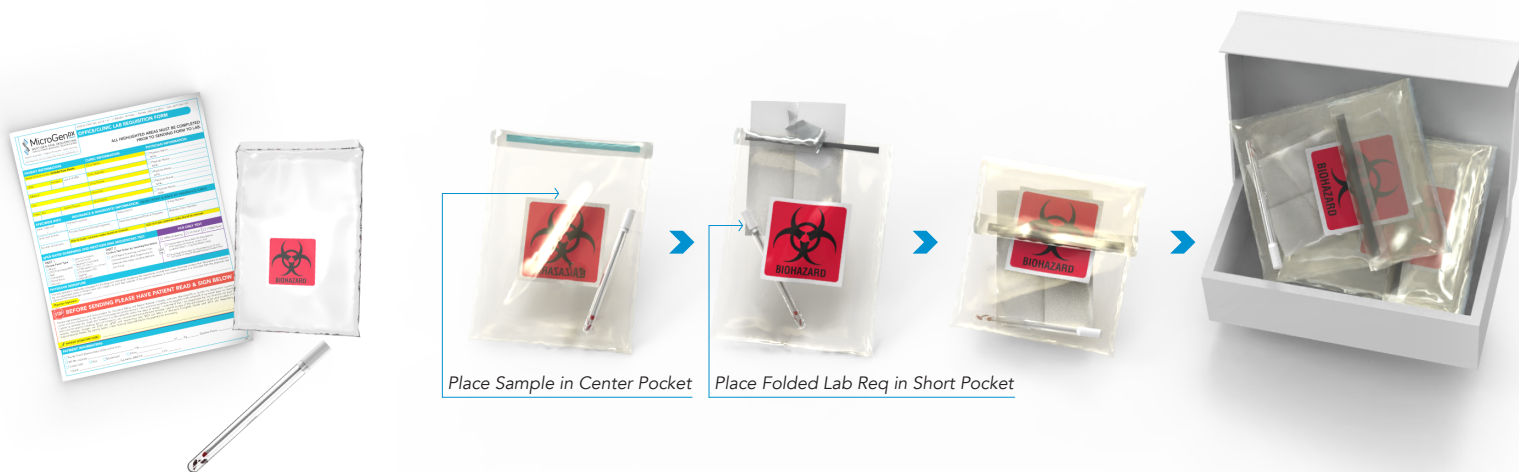
### 3. INSURANCE INFORMATION

Submit patient face sheet and demographics with insurance information or both sides of a patient's insurance card. If this is a prepaid test skip this step.



## PACKING SAMPLES FOR SHIPMENT

1. Place the Swab Specimen Tube/2mL Vial into the center/sealable pocket of Biohazard Lab Bag.
2. Place folded Lab Requisition Form into the short pocket of the Lab Bag.
3. **IMPORTANT:** Place only one Sample and one Lab Requisition in each Lab Bag.
4. Peel strip off Lab Bag to expose adhesive backing and follow instructions printed on Bag to create a continuous, airtight seal.
5. Place the sealed Lab Bag into the MicroGenDX Shipping Box (shipping label already attached to bottom of box).
6. Close the MicroGenDX Shipping Box and seal with the clear sealing sticker or a piece of tape.
7. You can add multiple completed lab bags into the MicroGenDX Shipping Box.



## 3 CONVENIENT FEDEX SHIPPING METHODS

1. Drop into FedEx Dropbox including Kinkos FedEx locations
2. For Physician Offices Only: Call for pick up 1-800-GoFedEx (1-800-463-3339). Say "agent" twice to speak to agent. Let them know it's prepaid pick up.
3. For Physician Offices Only: Use our online "schedule a pick up" page at MicroGenDX.com. *Make sure to retain your tracking number.*

