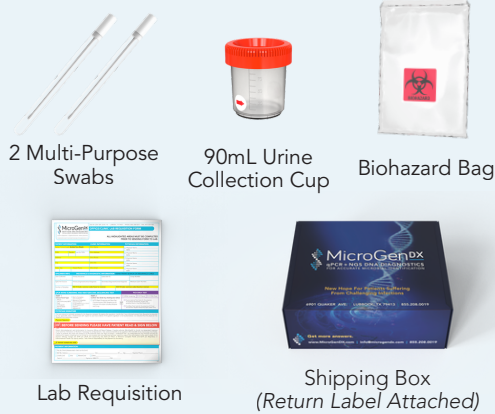


THIS TEST COMES WITH:

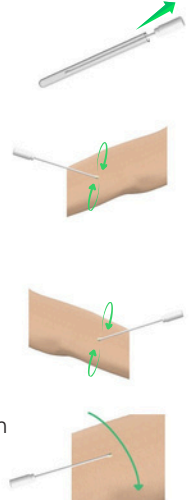


COLLECTION DO'S & DON'TS

- ✓ **DO** — Avoid contact with any deodorants as they may contain materials that inhibit PCR.
- ✓ **DO** — Clean bilateral axilla with soap and water if deodorant is present.
- ✓ **DO** — Clean the genital area with soap and water before collecting the sample.
- ✓ **DO** — Ship your sample as soon as possible after collection. This is optimal, however, if there is a slight delay, MicroGenDX samples are stable significantly longer than culture samples.
- ✗ **DO NOT** — Get biocides or cleaning agents on the tissue or swab sample. They will also degrade the DNA during transport to the lab.
- ✗ **DO NOT** — Allow Lidocaine to touch the sample. Lidocaine will degrade microbial DNA.
- ✗ **DO NOT** — Use catheters coated with lidocaine or biocides. These can render sample invalid or give false negative test results.
- ✗ **DO NOT** — Take in large amounts of fluids two hours in advance of first sample.
- ✗ **DO NOT** — Use anti-fungals for 48 hours prior to sample collection.
- ✗ **DO NOT** — Use Biofilm disrupting products. These agents may contain substances, like DNase, that can destroy bacterial DNA and inhibit your results. Consider instructing patients to pause the use of Biofilm disruptors for 24-48hrs prior to sample collection.

SWAB OF BILATERAL AXILLA & GROIN (Preferred Method)

- STEP 1**
Open the swab by twisting the cap at the dotted line on the tube.
- STEP 2**
Using a swiping motion swab the patient's left bilateral axilla (armpit) making sure to rotate the swab 360 degrees to cover as much of the swab surface area as possible.
- STEP 3**
Using the same swab, swab the right bilateral axilla. Insert swab into specimen tube and seal tightly.
- STEP 4**
Open the second swab. Using a swiping motion swab the groin area. When finished insert swab into specimen tube and seal tightly. ***Both swabs will be run together for one result.**



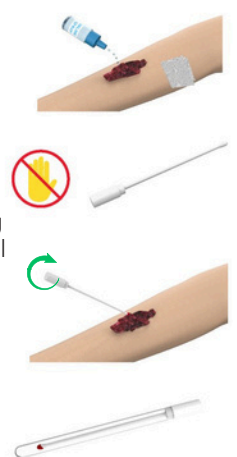
URINE SAMPLE (Optional Method)

- STEP 1**
Wash hands thoroughly. Cleanse all areas around the urinary exit with soap and water. With a clean tissue, blot off the urethra without touching any part of genital area with hands.
- STEP 2**
Spread a clean tissue on a surface close to the toilet bowl. Remove the lid from the urine cup and place it top-side down on the tissue. Place the open urine cup next to the tissue, being careful not to touch the rim of the cup or lid with fingers or body surface at any time.
- STEP 3**
For Women: Before urination, separate the labia, avoid touching the urethra opening.
For Men: Before urination, retract the foreskin (if uncircumcised), avoid touching the urethra opening.
- STEP 4**
Hold the empty cup in one hand. Begin urination into toilet, not cup, stop urination partway through then continue urination into cup. Keep urinating into cup until the amount in the cup is level with the red arrow sticker. Do not fill the cup more than 1/2 full. Finish urinating into toilet.
- STEP 5**
Secure the lid tightly by placing the lid directly on the cup and turning until you hear two clicks. This indicates the cup is locked.



WOUND SAMPLE (Optional Method)

- STEP 1**
Use gauze and saline to lightly wipe the surface area to remove slough.
- STEP 2**
Open the swab ensuring hands do not touch the stem.
- STEP 3**
Roll the swab over entire surface area of the wound applying pressure as it moves across the wound. Get as much material on the swab as possible to ensure a conclusive sample.
- STEP 4**
Insert swab into specimen tube and seal tightly.
- STEP 5**
(optional) A pea sized amount of tissue may be extracted with a clean surgical tool and sent in the 90mL collection cup.



SEE PATIENT INFORMATION & SHIPPING INSTRUCTIONS ON REVERSE ↑

Correct packaging is vital to ensuring your sample is processed in a timely manner. Please follow the steps below.

PATIENT INFORMATION

1. MARK SAMPLE

Use a permanent marker to write patient name, date of birth and sample collection date on the Multi-Purpose Swab Tube or 90mL Urine Collection Cup.



2. SIGN LAB REQ

Please have the patient sign the lab requisition form accepting financial responsibility. Be sure the physician has also signed the lab requisition form confirming consent.



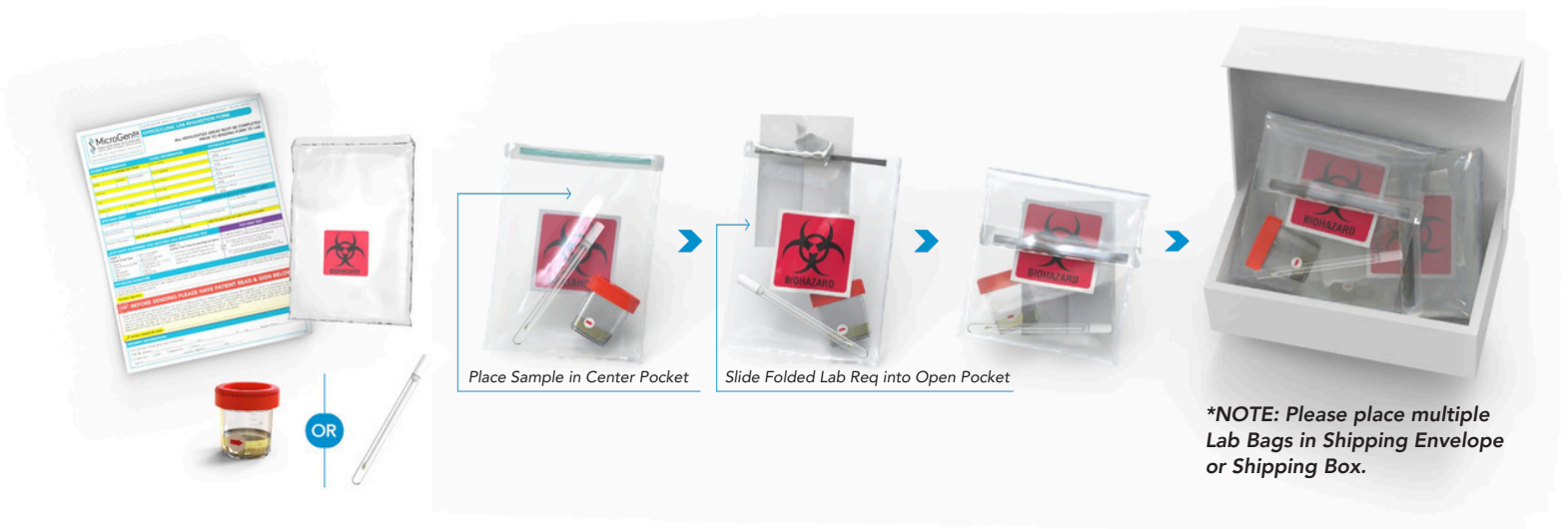
3. INSURANCE INFORMATION

Submit patient face sheet and demographics with insurance information or both sides of a patient's insurance card. If this is a prepaid test skip this step.



PACKING SAMPLES FOR SHIPMENT

1. Slide the folded Lab Requisition Form into the open back pocket of the Biohazard Bag.
2. Place the Multi-Purpose Swab or 90mL Urine Collection Cup into the center sealable pocket of Biohazard Bag.
3. **IMPORTANT:** Place only one Sample and one lab requisition in each Biohazard Bag.
4. Securely seal the Biohazard Bag making sure it is completely closed.
5. Place the sealed Biohazard Bag into the MicroGenDX Shipping Box (**shipping label already attached to bottom of box*).
6. Close the MicroGenDX Shipping Box and seal with the clear sealing sticker or a piece of tape.
7. **You can add multiple completed Biohazard Bags into the MicroGenDX Shipping Box.**



3 CONVENIENT FEDEX SHIPPING METHODS

1. Drop into FedEx Dropbox including FedEx locations.
2. For Physician Offices Only: Call for pick up 1-800-GoFedEx (1-800-463-3339). Say "agent" twice to speak to agent. Let them know it's a prepaid pick up.
3. For Physician Offices Only: Use our online "Schedule a Pickup" page at www.MicroGenDX.com. **Make sure to retain your tracking number.**

