



## BV/VAGINAL SAMPLE COLLECTION METHOD | FOR WOMEN

### THIS TEST COMES WITH:



2 Vaginal Swabs



1 Bio Bag



1 Lab Requisition



Box with  
Return Label

### COLLECTION DO'S & DON'TS

- ✓ **DO** - Ship the sample as soon as possible after collection. MicroGenDX stability testing shows samples as viable at room temperature for at least 21 days after collection.
- ✗ **DO NOT** - Use vaginal suppositories for 24 hours prior to collection.
- ✗ **DO NOT** - Take antibiotics. Although this test can still be performed, patients should be off all antibiotics for 2 days prior to collection. Consult with your healthcare provider before going off antibiotics.
- ✗ **DO NOT** - Contaminate the sample with period blood during menstruation. If possible avoid collecting sample during menstruation.



Scan this code to view video  
sample collection instructions.

### SWAB METHOD

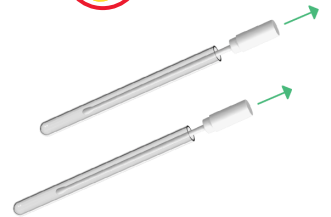
#### STEP 1

Clean the genital area with soap and water before collecting the sample.



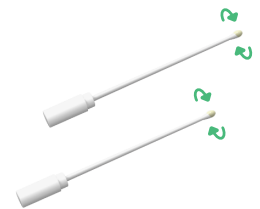
#### STEP 2

Twist the cap at the dotted line to break the seal. Remove the Swab completely from the tube not letting your hands touch the swab beyond the break point.



#### STEP 3

Hold the swab in one hand, use the second hand to separate the labia majora. Then carefully insert the swab into the vaginal opening 2 inches (5cm) past the introitus. DO NOT insert the swab further than 2 inches to avoid injury. Gently rotate while twisting the swab for 20 seconds around the interior walls of the vagina. The swab must touch the walls of the vagina to absorb the necessary moisture. When withdrawing the swab, do so without touching the skin. Use the second swab to repeat the sample collection using the exact same sampling procedure.



#### STEP 4

Insert the swabs back into the tube and push to securely close.



#### STEP 5

Put **BOTH** swabs in the lab bag and tightly seal.

SEE PATIENT INFORMATION &  
SHIPPING INSTRUCTIONS ON REVERSE



## PATIENT INFORMATION

### 1. MARK SAMPLE

Use a permanent marker to write patient name, date of birth and sample collection date on Vaginal Swab Tubes.



### 2. SIGN LAB REQ

Please have the patient sign the lab requisition form accepting financial responsibility. Be sure the physician has also signed the lab requisition form confirming consent.



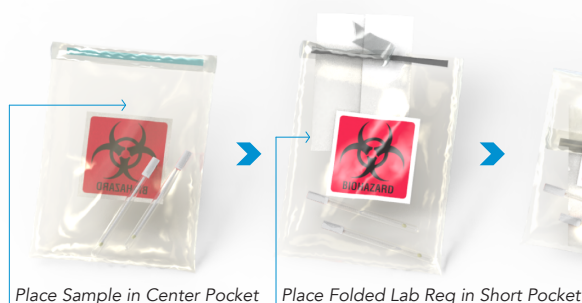
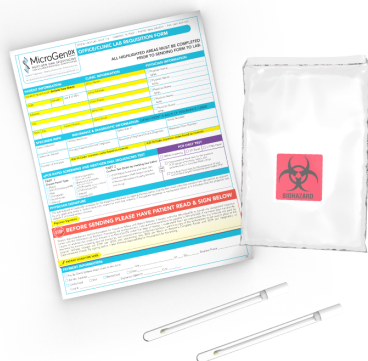
### 3. INSURANCE INFORMATION

Submit patient face sheet and demographics with insurance information or both sides of a patient's insurance card. If this is a prepaid test skip this step.



## PACKING SAMPLES FOR SHIPMENT

1. Place the Vaginal Swab Tube into the center/sealable pocket of Biohazard Lab Bag.
2. Place folded Lab Requisition Form into the short pocket of the Lab Bag.
3. **IMPORTANT:** Place only one Sample and one Lab Requisition in each Lab Bag.
4. Peel strip off Lab Bag to expose adhesive backing and follow instructions printed on Bag to create a continuous, airtight seal.
5. Place the sealed Lab Bag into the MicroGenDX Shipping Box (shipping label already attached to bottom of box).
6. Close the MicroGenDX Shipping Box and seal with the clear sealing sticker or a piece of tape.
7. You can add multiple completed lab bags into the MicroGenDX Shipping Box.



Place Sample in Center Pocket

Place Folded Lab Req in Short Pocket



## 3 CONVENIENT FEDEX SHIPPING METHODS

1. Drop into FedEx Dropbox including Kinkos FedEx locations
2. For Physician Offices Only: Call for pick up 1-800-GoFedEx (1-800-463-3339). Say "agent" twice to speak to agent. Let them know it's prepaid pick up.
3. For Physician Offices Only: Use our online "schedule a pick up" page at MicroGenDX.com. *Make sure to retain your tracking number.*

